

PAPPELL

FINISHES

LIVING
OFF
EXPERIENCE



“At Papell Design, our finishes are the cornerstone of our craftsmanship. Whether we work with fine materials like wood in ash, beech, oak, or walnut, it's the exquisite palette of colors and the luxurious fabrics we employ that breathe life into our designs, reflecting the essence of the present moment.”



PAPPELL

Contents

Fabric / Indoor.....	4
Fabric / Outdoor.....	16
Ropes	21
Leather / Artificial.....	23
Leather / Genuine.....	27
Wood Polish.....	28
Quartz.....	29
Marble.....	30
Compact	31
Metal.....	32

Fabric / Indoor / Cielo



cielo-383



cielo-476



cielo-1811



cielo-1819



cielo-1873



cielo-1885



cielo-2013



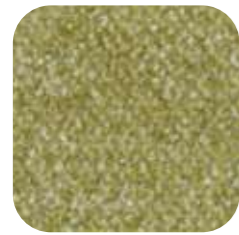
cielo-2074



cielo-2702



cielo-2718



cielo-2727



cielo-2778



cielo-2912



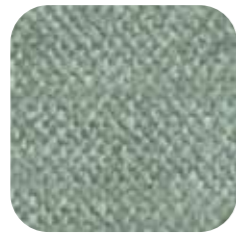
cielo-5501



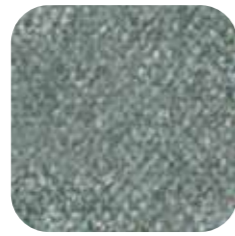
cielo-5516



cielo-5522



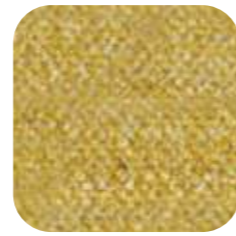
cielo-5904



cielo-5999



cielo-18102



cielo-27106



cielo-27107



cielo-55104

Fabric / Indoor / Eyes



eyes-20



eyes-24



eyes-25



eyes-28



eyes-32



eyes-47



eyes-59



eyes-61



eyes-74

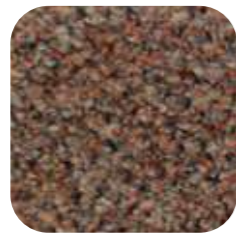


eyes-96

Fabric / Indoor / Fusion



fusion-3



fusion-5



fusion-22



fusion-25



fusion-28



fusion-29



fusion-30



fusion-31



fusion-32



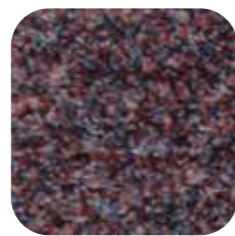
fusion-33



fusion-34



fusion-35



fusion-45



fusion-53



fusion-59



fusion-96



fusion-100

Fabric / Indoor / Lisa



lisa-90



lisa-140



lisa-147



lisa-163



lisa-167



lisa-185



lisa-199



lisa-241



lisa-295



lisa-305



lisa-320



lisa-335



lisa-340



lisa-346



lisa-410



lisa-415



lisa-480



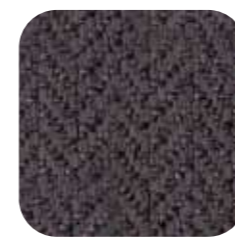
lisa-542



lisa-608



lisa-670



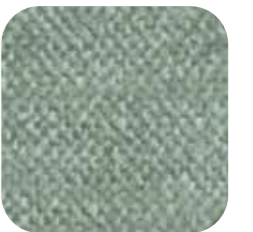
lisa-924

Luna Armchair

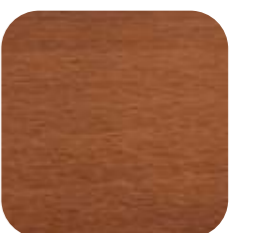
Elegant design embodies the perfect balance of strength and grace, making it a versatile addition to any space, where nature meets modernity



light gold
brushed



cielo-5904



1087 1-1 walnut
dark

Fabric / Indoor / Heat



h-amsterdam



h-app-1



h-app-2



h-app-pattern



h-asmara



h-baku



h-base



h-blend-1



h-blend-2



h-bonbon



h-bordeaux-1



h-bordeaux-2



h-boston



h-break



h-brussels



h-crown-1



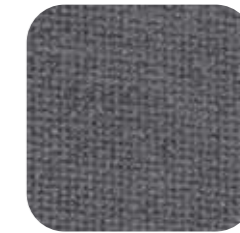
h-crown-2



h-dream



h-dublin



h-edinburgh



h-ethan-nano



h-fantasy (circus)



h-gordon



h-gordon-2068



h-granada



h-honey



h-ivy



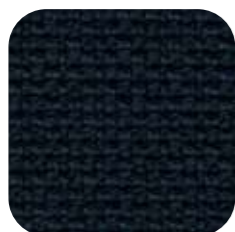
h-kopenhagen



h-luanda



h-madrid



h-madrid-09



h-map



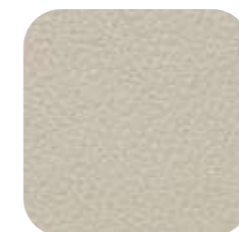
h-milan



h-mine



h-montreal



h-moon-soft



h-nano-soft

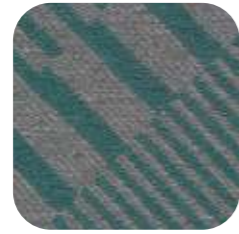


h-napp-nano

Fabric / Indoor / Heat II



h2-point



h2-rebus



h2-relax-1



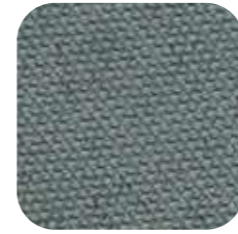
h2-relax-2



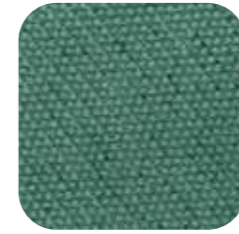
h2-renna



h2-riga



h2-ritz



h2-ritz-0016



h2-ritz-pattern



h2-road



h2-roma



h2-royal-velvet-1



h2-royal-velvet-2



h2-salzburg



h2-san-francisco



h2-sandino-1



h2-sandino-2



h2-santos



h2-savoy



h2-scarlett



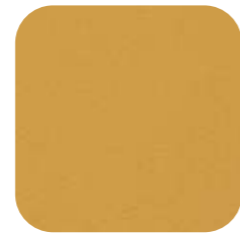
h2-seattle



h2-seoul



h2-ser-1



h2-ser-2



h2-sofia



h2-street



h2-tokio



h2-torino



h2-vienna



h2-vivaci



h2-vivaci-1678



h2-york

Fabric / Indoor / Indiana



indiana-503



indiana-5401



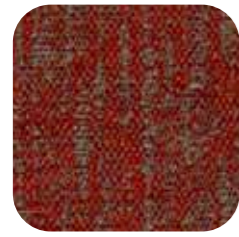
indiana-5402



indiana-5403



indiana-5404



indiana-5405



indiana-5406



indiana-9851



indiana-9852



indiana-9853



indiana-16051



indiana-16053



indiana-16054

Fabric / Indoor / Lime



lime-02



lime-04



lime-06



lime-08



lime-10



lime-12



lime-14



lime-16



lime-18



lime-20



lime-22



lime-24



lime-26



lime-28



lime-30



lime-32

Fabric / Indoor / Miles



miles-01



miles-03



miles-05



miles-07



miles-09



miles-11



miles-13



miles-15



miles-17



miles-19



miles-21



miles-23



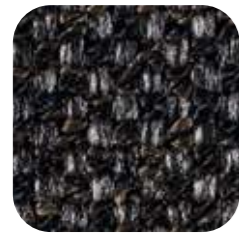
miles-25



miles-27



miles-29



miles-31

Fabric / Indoor / Miss



miss-05



miss-09



miss-13



miss-22



miss-23



miss-32



miss-46



miss-66



miss-74



miss-101

Fabric / Indoor / Moqui



moqui-7



moqui-9



moqui-13



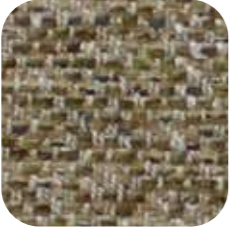
moqui-20



moqui-23



moqui-31



moqui-68



moqui-84

Fabric / Indoor / New Sabine



ns-anthrazit



ns-apricot



ns-aqua



ns-beige-red



ns-black



ns-blue



ns-brown



ns-cement-grey



ns-cherry



ns-choco



ns-green-grey



ns-ivory



ns-kiwi



ns-lilac



ns-maroc



ns-nordic



ns-pale-brown



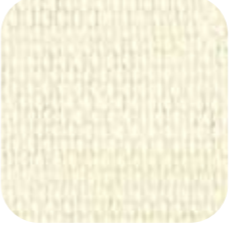
ns-pink



ns-saddle



ns-sand



ns-white

Fabric / Indoor / Profile



profile-03



profile-16



profile-20



profile-25



profile-31



profile-32



profile-41



profile-44



profile-50



profile-63



profile-94

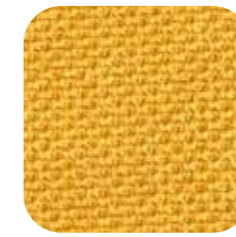


profile-100

Fabric / Indoor / Relax



relax-05



relax-18



relax-20



relax-21



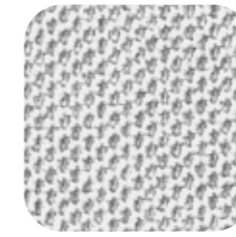
relax-23



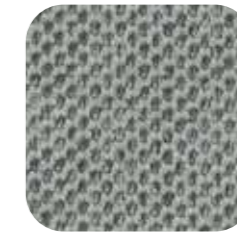
relax-25



relax-28



relax-31



relax-32



relax-40



relax-43



relax-48



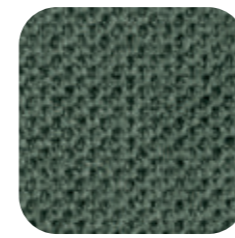
relax-53



relax-56



relax-57



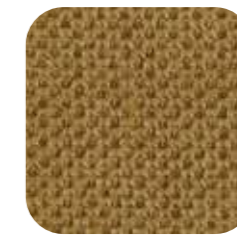
relax-62



relax-66



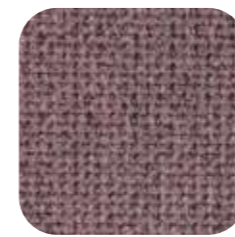
relax-74



relax-81



relax-92



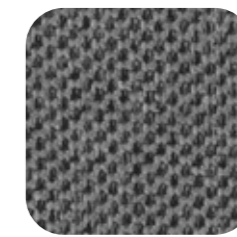
relax-94



relax-96



relax-100



relax-103

Fabric / Indoor / Shiny



shiny-0003



shiny-0006



shiny-0020



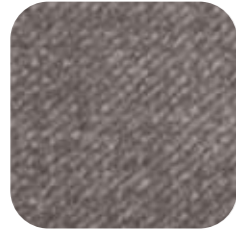
shiny-0024



shiny-0025



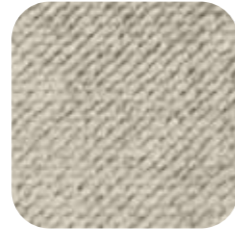
shiny-0028



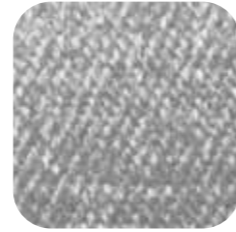
shiny-0029



shiny-0030



shiny-0032



shiny-0039



shiny-0041



shiny-0047



shiny-0050



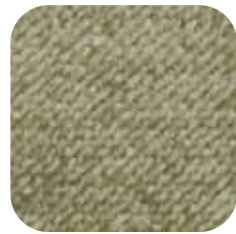
shiny-0056



shiny-0057



shiny-0059



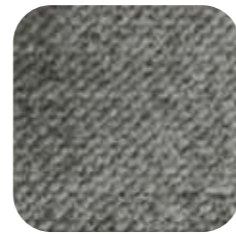
shiny-0062



shiny-0064



shiny-0066



shiny-0074



shiny-0096



shiny-0100



shiny-0104

Fabric / Indoor / Vanish



vanish-7



vanish-9



vanish-13



vanish-20



vanish-23



vanish-31



vanish-68



vanish-84

Fabric / Indoor

CIELO

Test Tipi / Technical Info	Birim / Unit	Limit / Value	Norm / Test Method
Gramaj	gr/m ²	425 (±%5)	ISO 3801:1977
Aşınma Direnci Martindale	tour	50.000	EN ISO 12947-2
Alev Geciktiricilik Flammability-clothing		The Cigarette Test Pass	EN 1021 1-1 : 2006
Renk Hassasiyeti Colour Fastness	dry wet artificial light	5 4/5 4/5	ISO 105 - X 12 ISO 105 B02
Boncuklama Pilling		4-5	ISO 12945-2

EYES

Test Tipi / Technical Info	Birim / Unit	Limit / Value	Norm / Test Method
Gramaj	gr/m ²	410 (±%5)	ISO 3801:1977
Aşınma Direnci Martindale	Martindale Martindale 2000 cycle	45.000 4	EN ISO 12947-2
Alev Geciktiricilik Flammability-clothing	Cigarette Test	Pass	EN 1021 1-1 : 2006
Renk Hassasiyeti Colour Fastness	dry / wet	4/5 4/5	ISO 105 - X 12 ISO 105 B02
Boncuklama Pilling	Martindale Pilling 2000 cycle Brush Pilling	4/5	ISO 12945-2

FUSION

Test Tipi / Technical Info	Birim / Unit	Limit / Value	Norm / Test Method
Gramaj	gr/m ²	410 (±%5)	BS EN ISO 14465:2003
Aşınma Direnci Martindale	Martindale Martindale 3000 cycle	35.000 4	EN ISO 12947-2 EN ISO 20105-A02
Alev Geciktiricilik Flammability-clothing	Cigarette Test	Pass	EN 1021 1-2
Renk Hassasiyeti Colour Fastness	dry / wet	6-7	EN ISO 105 - X 12
Boncuklama Pilling	Martindale Pilling 2000 cycle Brush Pilling	4/5	EN ISO 12945-2 D3511-99A

HEAT

Test Tipi / Technical Info	Birim / Unit	Limit / Value	Norm / Test Method
Gramaj	gr/m ²	450 (±%5)	DIN EN 12127
Aşınma Direnci Martindale	Martindale	95.000	EN ISO 12947-1,2
Alev Geciktiricilik Flammability-clothing		Pass	EN 1021 1-2
Renk Hassasiyeti Colour Fastness	dry / wet	4/5 4/5	EN ISO 105 - X 12
Boncuklama Pilling	2000 dvr	4	EN ISO 12945-2 D3511-99A

HEAT II

Test Tipi / Technical Info	Birim / Unit	Limit / Value	Norm / Test Method
Gramaj	gr/m ²	450 (±%5)	DIN EN 12127
Aşınma Direnci Martindale	Martindale	95.000	EN ISO 12947-1,2
Alev Geciktiricilik Flammability-clothing		Pass	EN 1021 1-2
Renk Hassasiyeti Colour Fastness	dry / wet	4/5 4/5	EN ISO 105 - X 12
Boncuklama Pilling	2000 dvr	4	EN ISO 12945-2 D3511-99A

INDIANA

Test Tipi / Technical Info	Birim / Unit	Limit / Value	Norm / Test Method
Gramaj	gr/m ²	Indiana 560	
Aşınma Direnci Martindale	Martindale Martindale 3000 cycle	Indiana 120.000	EN ISO 12947-2 : 2016
Boncuklama Pilling	2000 cycle	5	EN ISO 12945-2
Renk Hassasiyeti Colour Fastness	wet / dry / light	4-5 / 4-5 / 5	EN ISO 105 - X 12

LIME

Test Tipi / Technical Info	Birim / Unit	Limit / Value	Norm / Test Method
Gramaj	gr/m ²	420 (±%5)	BS EN ISO 14465:2003
Aşınma Direnci Martindale	Martindale	55.000	EN ISO 12947-2
Alev Geciktiricilik Flammability-clothing		Pass	EN 1021 1-2
Renk Hassasiyeti Colour Fastness	dry / wet	4/5 4/5	EN ISO 105 - X 12
Boncuklama Pilling	Martindale Pilling 2000 cycle	4/5	EN ISO 12945-2

LISA

Test Tipi / Technical Info	Birim / Unit	Limit / Value	Norm / Test Method
Gramaj	gr/m ²	410 (±%5)	BS EN ISO 14465:2003
Aşınma Direnci Martindale	Martindale 2000 cycle	4	EN ISO 20105-A02
Alev Geciktiricilik Flammability-clothing		Pass	EN 1021 1-2
Renk Hassasiyeti Colour Fastness	dry / wet	6-7	EN ISO 105 - X 12
Boncuklama Pilling	Brush Pilling	4	D3511-99A

Fabric / Indoor

MILES

Test Tipi / Technical Info	Birim / Unit	Limit / Value	Norm / Test Method
Gramaj	gr/m ²	425 (±%5)	ISO 3801:1977
Aşınma Direnci Martindale	tour	50.000	EN ISO 12947-2
Alev Geciktiricilik Flammability-clothing		The Cigarette Test Pass	EN 1021 1-1 : 2006
Renk Hassasiyeti Colour Fastness	dry wet artificial light	5 4/5 4/5	ISO 105 - X 12 ISO 105 B02
Boncuklama Pilling		4-5	ISO 12945-2

MISS

Test Tipi / Technical Info	Birim / Unit	Limit / Value	Norm / Test Method
Gramaj	gr/m ²	425 (±%5)	
Aşınma Direnci Martindale	Martindale Martindale 3000 cycle	The Cigarette Test Pass	EN ISO 12947-2 : 2016
Boncuklama Pilling	2000 cycle	5	EN ISO 12945-2
Renk Hassasiyeti Colour Fastness	wet / dry	4-5 / 4-5	EN ISO 105 - X 12

MOQUI

Test Tipi / Technical Info	Birim / Unit	Limit / Value	Norm / Test Method
Gramaj	gr/m ²	410 (±%5)	BS EN ISO 14465:2003
Aşınma Direnci Martindale	Martindale Martindale 3000 cycle	35.000 4	EN ISO 12947-2 EN ISO 20105-A02
Alev Geciktiricilik Flammability-clothing		Pass	EN 1021 1-2
Renk Hassasiyeti Colour Fastness	dry / wet	4/5 4/5	EN ISO 105 - X 12
Boncuklama Pilling	Martindale Pilling 2000 cycle Brush Pilling	4/5	EN ISO 12945-2 D3511-99A

NEW SABINE

Test Tipi / Technical Info	Birim / Unit	Limit / Value	Norm / Test Method
Gramaj	gr/m ²	410 (±%5)	BS EN ISO 14465:2003
Aşınma Direnci Martindale	Martindale 5000 dvr/4 Martindale 1. iplik	3 40.000	EN ISO 12947-2 / ISO1294 EN ISO 12947-2
Yırtılma Direnci Tear Strenght	N	ATKI 154 ÇÖZGÜ 190	ISO 13937-2
Renk Hassasiyeti Colour Fastness	dry / wet	5 / 5	ISO 12945-2
Boncuklama Pilling	2000 dvr	4	EN ISO 105- X 12

PROFILE

Test Tipi / Technical Info	Birim / Unit	Limit / Value	Norm / Test Method
Gramaj	gr/m ²	525 (±%5)	ISO 3801:1977
Aşınma Direnci Martindale	tour	50.000	EN ISO 12947-2
Alev Geciktiricilik Flammability-clothing		The Cigarette Test Pass	EN 1021 1-1 : 2006
Renk Hassasiyeti Colour Fastness	dry wet artificial light	5 4/5 4/5	ISO 105 - X 12 ISO 105 B02
Boncuklama Pilling		4-5	ISO 12945-2

RELAX

Test Tipi / Technical Info	Birim / Unit	Limit / Value	Norm / Test Method
Gramaj	gr/m ²	560	ISO 3801:1977
Aşınma Direnci Martindale	Martindale Martindale 3000 cycle	5	EN ISO 12947-2 : 2016
Boncuklama Pilling	2000 cycle	The Cigarette Test Pass	EN ISO 12945-2
Renk Hassasiyeti Colour Fastness	wet / dry / light	4-5 / 4-5 / 5	EN ISO 105 - X 12

SHINY

Test Tipi / Technical Info	Birim / Unit	Limit / Value	Norm / Test Method
Gramaj	gr/m ²	410 (±%5)	BS EN ISO 14465:2003
Aşınma Direnci Martindale	Martindale Martindale 3000 cycle	35.000 4	EN ISO 12947-2 EN ISO 20105-A02
Alev Geciktiricilik Flammability-clothing		Pass	EN 1021 1-2
Renk Hassasiyeti Colour Fastness	dry / wet	4/5 4/5	EN ISO 105 - X 12
Boncuklama Pilling	Martindale Pilling 2000 cycle Brush Pilling	5	EN ISO 12945-2 D3511-99A

VANISH

Test Tipi / Technical Info	Birim / Unit	Limit / Value	Norm / Test Method
Gramaj	gr/m ²	410 (±%5)	BS EN ISO 14465:2003
Aşınma Direnci Martindale	Martindale Martindale 3000 cycle	35.000 4	EN ISO 12947-2 EN ISO 20105-A02
Alev Geciktiricilik Flammability-clothing		Pass	EN 1021 1-2
Renk Hassasiyeti Colour Fastness	dry / wet	6 - 7	EN ISO 105 - X 12
Boncuklama Pilling	Martindale Pilling 2000 cycle Brush Pilling	4/5	EN ISO 12945-2 D3511-99A

Fabric / Outdoor / Livio



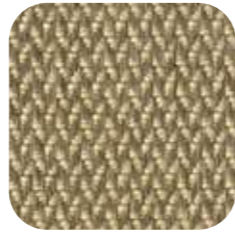
livio-01



livio-02



livio-03



livio-04



livio-08



livio-09



livio-12



livio-14



livio-19



livio-22



livio-24



livio-26



livio-27

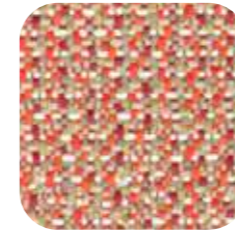


livio-28

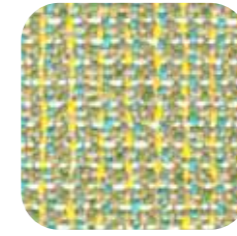
Fabric / Outdoor / Matteo



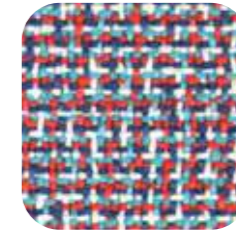
matteo-01



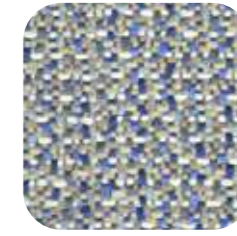
matteo-09



matteo-10



matteo-23



matteo-24



matteo-25

Fabric / Outdoor / Nario



nario-01



nario-02



nario-09



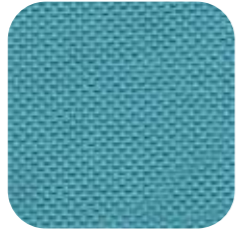
nario-15



nario-16



nario-18



nario-24



nario-28



nario-30



nario-32



nario-33



nario-34



nario-100

Fabric / Outdoor / Sekoya



sekoya-138



sekoya-143



sekoya-161



sekoya-183



sekoya-185



sekoya-190



sekoya-200



sekoya-210



sekoya-220

Fabric / Outdoor / Telma



telma-22



telma-26



telma-28



telma-101



telma-102



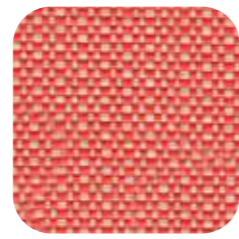
telma-103



telma-104



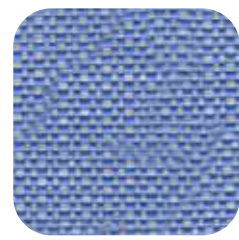
telma-108



telma-109



telma-114



telma-122



telma-126



telma-128

Fabric / Outdoor / Tetra



tetra-1000



tetra-1001



tetra-1002



tetra-1005



tetra-1009



tetra-1013



tetra-1015



tetra-1017



tetra-1018



tetra-1021



tetra-1022



tetra-1023



tetra-1025



tetra-1026



tetra-1027



tetra-1030



tetra-1035



tetra-1046



tetra-1049



tetra-1050



tetra-1052



tetra-1063



tetra-1064



tetra-1067



tetra-1068



tetra-1070



tetra-1072

Fabric / Outdoor / Tuyo



tuyo-102



tuyo-103



tuyo-104



tuyo-106



tuyo-107



tuyo-113



tuyo-115



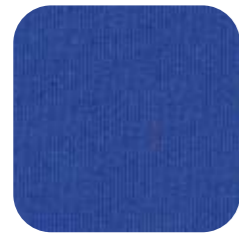
tuyo-117



tuyo-120



tuyo-122



tuyo-123



tuyo-125



tuyo-127



tuyo-164



tuyo-165



tuyo-170



tuyo-411



tuyo-501



tuyo-502



tuyo-504



tuyo-507



tuyo-508



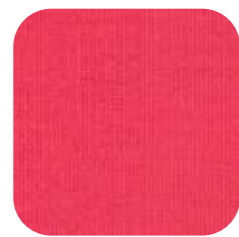
tuyo-509



tuyo-510



tuyo-511



tuyo-544

Fabric / Outdoor / Vero



vero-01



vero-10



vero-23



vero-24



vero-25



vero-101



vero-109

Fabric / Outdoor TELMA

LIVIO

Test Tipi / Technical Info	Birim / Unit	Limit / Value	Norm / Test Method
Gramaj	gr/m ²	355	BS EN ISO 14465:2003
Aşınma Direnci Martindale	Martindale Martindale 3000 cycle	20.000 4	EN ISO 12947-2 EN ISO 20105-A02
Alev Geciktiricilik Flammability-clothing		Pass	EN 1021 1-2
Renk Hassasiyeti Colour Fastness	dry / wet	4/5 4/5	EN ISO 105 - X 12
Işık Hassaslığı Light Fastness	Martindale Pilling 2000 cycle Brush Pilling	4-5	BS EN 105-BO2 : 1994

Test Tipi / Technical Info	Birim / Unit	Limit / Value	Norm / Test Method
Gramaj	gr/m ²	343	BS EN ISO 14465:2003
Aşınma Direnci Martindale	Martindale	50.000	EN ISO 12945-2
Alev Geciktiricilik Flammability-clothing		Pass	EN 1021 1-2
Renk Hassasiyeti Colour Fastness	dry / wet	4/5 4/5	EN ISO 105 - X 12
Boncuklama Pilling	Martindale Pilling 2000 cycle	4-5	EN ISO 12945-2

MATTEO

Test Tipi / Technical Info	Birim / Unit	Limit / Value	Norm / Test Method
Gramaj	gr/m ²	463	BS EN ISO 14465:2003
Aşınma Direnci Martindale	Martindale	28.000	EN ISO 12945-2
Alev Geciktiricilik Flammability-clothing		Pass	EN 1021 1-2
Renk Hassasiyeti Colour Fastness	dry / wet	4/5 4/5	EN ISO 105 - X 12
Boncuklama Pilling	Martindale Pilling 2000 cycle Brush Pilling	5	EN ISO 12945-2 D3511-99A

TETRA

Test Tipi / Technical Info	Birim / Unit	Limit / Value	Norm / Test Method
Gramaj	gr/m ²	318	BS EN ISO 14465:2003
Aşınma Direnci Martindale	Martindale 3000 cycle	18.000	EN ISO 12947-2
Alev Geciktiricilik Flammability-clothing		Pass	EN 1021 1-2
Renk Hassasiyeti Colour Fastness	dry / wet	4/5 4/5	EN ISO 105 - X 12
Boncuklama Pilling	Martindale Pilling 2000 cycle	4/5	EN ISO 12945-2

NARIO

Test Tipi / Technical Info	Birim / Unit	Limit / Value	Norm / Test Method
Gramaj	gr/m ²	263	BS EN ISO 14465:2003
Aşınma Direnci Martindale	Martindale	23.000	EN ISO 12945-2
Alev Geciktiricilik Flammability-clothing		Pass	EN 1021 1-2
Renk Hassasiyeti Colour Fastness	dry / wet	4/5 4/5	EN ISO 105 - X 12
Boncuklama Pilling	Martindale Pilling 2000 cycle	4-5	EN ISO 12945-2

TUYO

Test Tipi / Technical Info	Birim / Unit	Limit / Value	Norm / Test Method
Gramaj	gr/m ²	206	BS EN ISO 14465:2003
Aşınma Direnci Martindale	Martindale 3000 cycle	13.000	EN ISO 12947-2
Alev Geciktiricilik Flammability-clothing		Pass	EN 1021 1-2
Renk Hassasiyeti Colour Fastness	dry / wet	4/5 4/5	EN ISO 105 - X 12
Boncuklama Pilling	Martindale Pilling 2000 cycle	4/5	EN ISO 12945-2

SEKOYA

Test Tipi / Technical Info	Birim / Unit	Limit / Value	Norm / Test Method
Gramaj	gr/m ²	410 (±%5)	BS EN ISO 14465:2003
Aşınma Direnci Martindale	Martindale	35.000	EN ISO 12945-2
Alev Geciktiricilik Flammability-clothing		Pass	EN 1021 1-2
Renk Hassasiyeti Colour Fastness	dry / wet	4/5 4/5	EN ISO 105 - X 12
Boncuklama Pilling	Martindale Pilling 2000 cycle	4/5	EN ISO 12945-2

VERO

Test Tipi / Technical Info	Birim / Unit	Limit / Value	Norm / Test Method
Gramaj	gr/m ²	410 (±%5)	BS EN ISO 14465:2003
Aşınma Direnci Martindale	Martindale 3000 cycle	35.000 4	EN ISO 12947-2 EN ISO 20105-A02
Alev Geciktiricilik Flammability-clothing		Pass	EN 1021 1-2
Renk Hassasiyeti Colour Fastness	dry / wet	4/5 4/5	EN ISO 105 - X 12
Boncuklama Pilling	Martindale Pilling 2000 cycle Brush Pilling	4/5	EN ISO 12945-2 D3511-99A

Ropes



dm-r012892



dm-r022894



dm-r032895



dm-r042896



dm-r052897



dm-r062898



dm-r072899



dm-r082900



dm-r092901



dm-r102902



dm-r112903



dm-r122904



dm-r132905



dm-r142906



dm-r152907



dm-r162908



dm-r172883



dm-r182884



dm-r192885



dm-r202886



dm-r212887



dm-r222888



dm-r232889



dm-r242890



dm-r252876



dm-r262877



dm-r272878



dm-r282879



dm-r292880



dm-r302881



dm-r312882

Ruby Armchair

Crafted from ashwood and hand-crafted rope, this exquisite piece seamlessly blends nature and artisanal skill, infusing any space with rustic elegance



dm-r012892



whisper-40619



2400 light walnut

Leather / Artificial / Bugatti



bugatti-60225 bugatti-60445 bugatti-60446 bugatti-60447 bugatti-60448



bugatti-60449 bugatti-60450 bugatti-60460 bugatti-60481 bugatti-60482



bugatti-60486 bugatti-60487 bugatti-60489 bugatti-60490 bugatti-60495



bugatti-60496 bugatti-60497 bugatti-60498 bugatti-60499 bugatti-60501



bugatti-60502 bugatti-60504 bugatti-60505 bugatti-60507 bugatti-60508



bugatti-61382 bugatti-61383 bugatti-61385

Leather / Artificial / Canyon



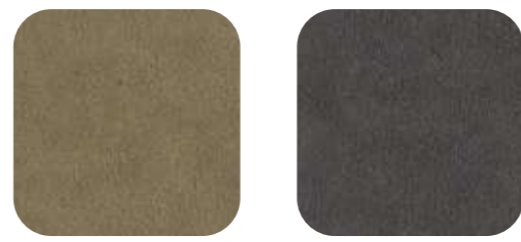
canyon-21728 canyon-21745 canyon-21747 canyon-21748 canyon-21749



canyon-21750 canyon-21751 canyon-21753 canyon-21754 canyon-21755



canyon-21757 canyon-21979 canyon-22658 canyon-22661 canyon-22662



canyon-22663 canyon-221758

Leather / Artificial / New King



Leather / Artificial / Whisper



Nova Armchair

Nova, the ideal dining chair, exudes a sense of newness and vitality. Designed by Emre Pektas, it combines minimalism with a distinct character, offering a finely tuned seating experience inspired by Scandinavian aesthetics. Crafted from premium materials and vibrant color options, Nova is the ultimate choice for your dining space.



bugatti-60508



1087 1-1 walnut
dark

Leather / Artificial

BUGATTI

Test Tipi / Technical Info	Birim / Unit	Limit / Value	Norm / Test Method
Gramaj	gr/m ²	650 (±5)	
Aşınma Direnci Martindale	Martindale	200.000	ISO 12947-2
Alev Geciktiricilik Flammability-clothing		Pass	EN 1021 1-2
Renk Hassasiyeti Colour Fastness	to light outdoor salt water	6-7 4-5	ISO 105 B04 ISO 105 E03
Easy Clean	clean regularly with a damp cloth, use water	mild soap, no aggressive nor abrasive detergents, no wax	

CANYON

Test Tipi / Technical Info	Birim / Unit	Limit / Value	Norm / Test Method
Gramaj	gr/m ²	700 (±0,05)	
Aşınma Direnci Martindale	Martindale	>100.000	BS EN ISO 12947-2:2016
Alev Geciktiricilik Flammability-clothing		Pass	BS 5852-1 : 1979
Renk Hassasiyeti Colour Fastness	to light'4/5	+5	DIN ISO 105-B02:1994

NEW KING

Test Tipi / Technical Info	Birim / Unit	Limit / Value	Norm / Test Method
Gramaj	gr/m ²	650 (±5)	
Aşınma Direnci Martindale	tour	>50.000	ISO 12947-2
Alev Geciktiricilik Flammability-clothing		The Cigarette Test Pass	EN 1021 1:2006
Renk Hassasiyeti Colour Fastness	DRY WET ARTIFICIAL LIGHT	5 4/5 4/5	EN ISO 105 - X 12 EN ISO 105 - B02
Boncuklama Pilling		4/5	ISO 12945-2

WHISPER

Test Tipi / Technical Info	Birim / Unit	Limit / Value	Norm / Test Method
Gramaj	gr/m ²	650 (±35)	
Aşınma Direnci Martindale		300.000	EN ISO 105-X 12
Alev Geciktiricilik Flammability-clothing		Pass	BS 5852 PART 1 EN 1021 - 1
Renk Hassasiyeti Colour Fastness	DRY WET ARTIFICIAL LIGHT	5 5 7	EN ISO 105 - X 12 EN ISO 12947-2 EN ISO 105 - B02
Easy Clean		Pass	

Leather / Genuine



030092837



034012840



060482839



071202835



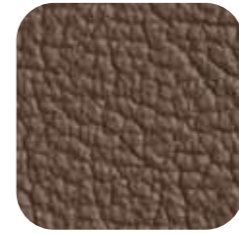
080892834



1098362844



1098402848



1098412845



1098422847



1098432841

Wood Polish



1900 tr black



2400 light walnut



2900 honey oak



3100 chesnut



7200 dark walnut



8100 black oak



1084 1-1 walnut dark



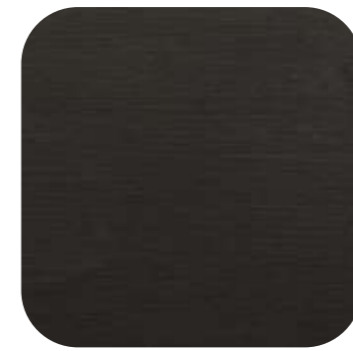
1084 1-1 walnut light



1087 1-1 walnut dark



1087 1-1 walnut light



2000 smoky black



3000 blush natural

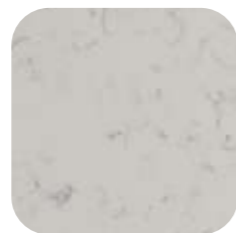


dark gold brushed



8100 black oak

Quartz



ALINDA



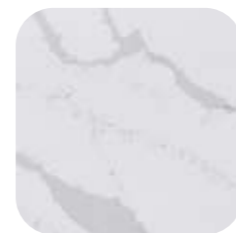
ARIZONA



BABILON



CHAKRA



FAIRY WHITE



PARMA

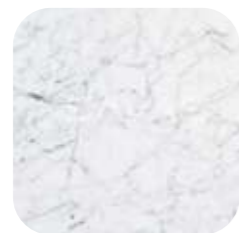


dark gold
brushed



ALINDA

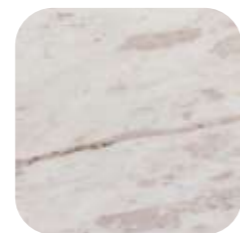
Marble



BIANCO



GREY TUNDRA



LEOPAR



PALAZO



PANDA



TRAVERTAN



TUNDRA



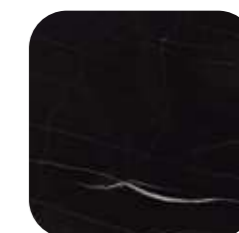
VERDE
GUETAMALA



RAL9005

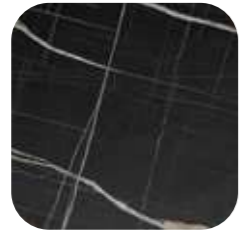


light gold
brushed



PALAZO

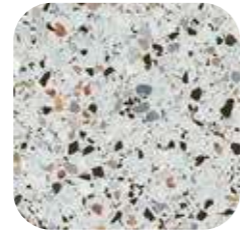
Compact



BRUNO



EYERIES



MANAROLA



MENDOZA



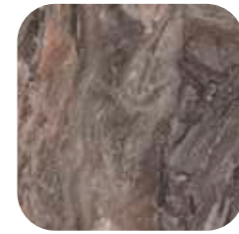
RED LEATHER



ROYAL MARBLE



SCALA MARBLE



SYDNEY



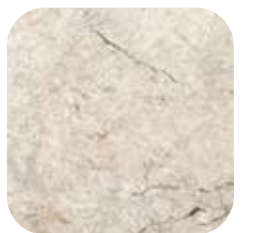
WEISSHON
MARBLE



RAL9005



dark gold
brushed



SCALA MARBLE

Metal / Electrolyzed Coated



black chrome



chrome



dark gold
brushed



light gold
brushed



dark copper
brushed



light copper
brushed

Metal / Powder Coated



RAL1004



RAL1019



RAL3002



RAL3005



RAL5003



RAL6020



RAL7022



RAL7039



RAL7044



RAL7048



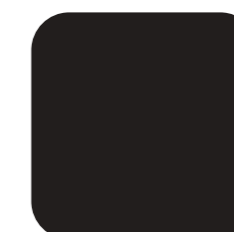
RAL8004



RAL8014



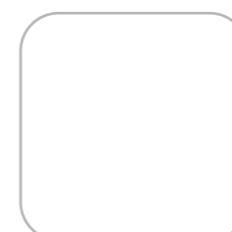
RAL9002



RAL9005



RAL9006



RAL9016